

 **CONDENSING
BOILERS**
**MAC COMBI
MAH HEATING**

with ARTIFICIAL INTELLIGENCE [AI]

SMARTER & EASIER
WITH 95% AFUE
EFFICIENCY

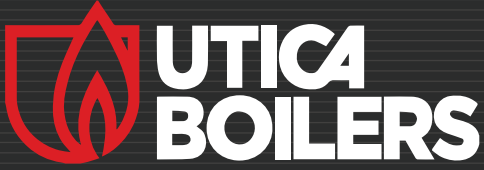
[AI] CONTROL

Self-Monitoring
Self-Adjusting
Self-Commissioning*



* Simply press two buttons to set up combustion.
Analyzer not required, but recommended.





Added protection for you and your family.

INTELLIGENT TECHNOLOGY

The MAC is an intelligent condensing approach to residential heat and domestic hot water.



SMART CHOICE [for contractors and homeowners]

The Utica High Efficiency Condensing Boiler uses **[AI]** Control Technology. The **[AI]** Control self commissions and continuously calibrates to ensure clean burning and optimum efficiency.

The **[AI]** Control measures water temperature, flue gas temperature, flame signal, and pressure that can impact the boiler operation and CO levels. The **[AI]** Control will automatically shut down operation should these values exceed normal operating levels. This provides added protection for you and your family.

Utica Boilers prides ourselves on safety. Though the **[AI]** Control indirectly monitors CO levels and acts accordingly, it is not a replacement for a CO Detector in your home.

[AI] CONTROL

- Digital Control with Graphic Display
- Boiler Status
- Temperature Display
- Diagnostics
- Automatically Adjusts for Fuel Type and Continuous Calibration

MODULATING TECHNOLOGY

The **[AI]** Control **automatically modulates** the gas input to the burner.

During times when the domestic hot water or heating demand is high, the control increases the amount of gas in order to meet the requirement. During times when the load demand is less, the **[AI]** Control decreases the gas input to **only use the amount of fuel necessary.**

Self-Monitoring
Self-Adjusting
Self-Commissioning

OPTIMUM
EFFICIENCY

[AI] modulation **saves energy** by reducing the amount of gas used. Homeowners enjoy comfort, energy savings, and **lower utility bills.**



Everyone enjoys the comfort

- **Homeowners** enjoy comfort, energy savings, and lower utility bills.
- **Contractors** enjoy the comfort of satisfied customers.



Refer to specifications for capacity and firing rate information.

DID YOU KNOW...

...that the typical gas-fired water heater is **wasting energy** by constantly maintaining the temperature of the water in the tank?

It's true. So why spend money continually heating water that you're not even using? There is a **better modern solution** when replacing your heating boiler. Consider a **MAC combination boiler** or, "combi boiler."

The benefits of the MAC combi boiler include:

- the highest efficiency level at 95% AFUE
- space savings/wall mounted
- the ability to both heat your home as well as provide your domestic hot water needs
- eliminates the wasted energy associated with traditional gas water heaters
- **MONEY SAVINGS.** By automatically modulating the gas input to the heating level that is needed, the boiler system operates at optimum efficiency, **resulting in savings for you.**

The MAC combi boiler provides both your home heating needs and your domestic hot water needs in **one super-efficient on-demand appliance.**

AT A GLANCE...



TAKE ADVANTAGE OF
REBATES
with **95% AFUE**



MAC205

MAH165

MAC150

MAH125

- 95% AFUE
- Featuring **[AI]** Control Technology
 - Recognizes Natural or LP Gas
 - No field conversion kit required
 - Self-Monitors and adjusts for fuel savings
 - Automatic Commissioning Combustion
- 7:1 Turndown Modulation Ratio in DHW Mode
- 5.5:1 Turndown Modulation Ratio in Heating Mode
- Primary/Secondary **LABOR SAVER™** Manifold Included
- Warranty Coverage
 - FREE 2-Year Parts & Labor Limited Warranty*
 - 10-Year Limited Heat Exchanger
- Built by American Craftsmen since 1928

EXCEPTIONAL SUPPORT

When it comes to support, Utica Boilers offers service that's beyond compare.

Our US-based support team is here for you AND your customers.

Our **Dealer Portal** offers a variety of resources, including tutorial videos and product specifications to help you every step of the way, from installation to maintenance to repair.

Utica condensing boilers come with a **FREE** **LABOR SAVER™** manifold, warranty, and support matched by no other manufacturer.

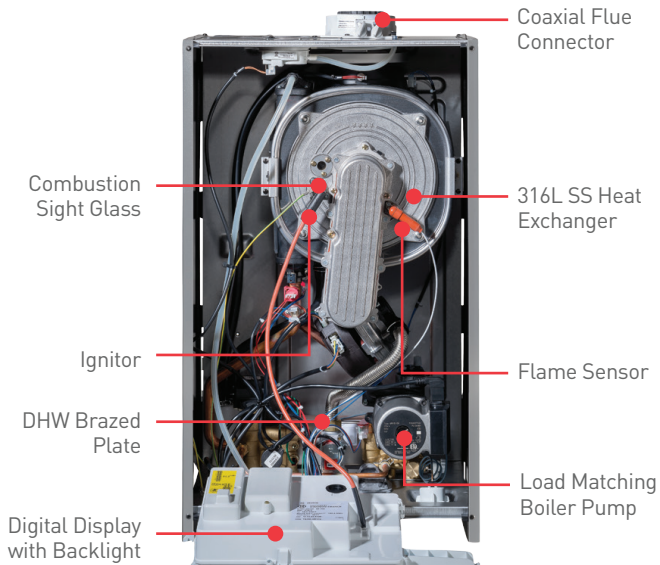


SAVE TIME & INCREASE PRODUCTIVITY with our **LABOR SAVER™ MANIFOLD**.

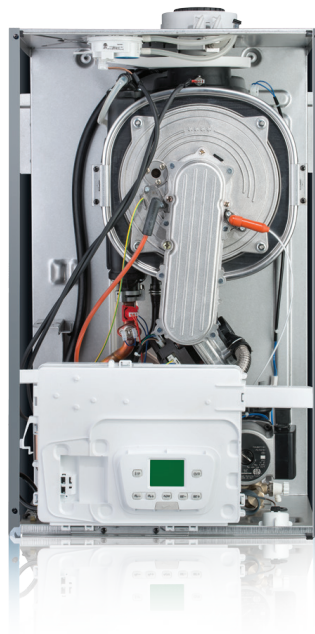
*Unit must be registered within 60 days from the date of original installation. All terms of Trinity Extended Service Agreement apply.

A CLOSER LOOK...

COMBI MODEL



HEATING ONLY MODEL



- Auto Commissioning and Continuous Calibration functions optimize combustion and result in lower fuel bills
- Features 316L Stainless Steel Heat Exchanger and Burner
- Features such as, high limit sensors, pressure relief valve, low water sensor, and system pressure gauge ensure safety and top performance of the unit
- Control Panel features a backlit digital display that indicates boiler status, temperature, and diagnostics
- Preheat function
- Built in load matching Pump contributes to savings in electrical usage



HEATING MODEL WITH OPTIONAL INDIRECT HOT WATER HEATER

Our **[AI]** control is programmed to recognize an indirect tank, with no need for a separate relay. Utica Boilers H2O Indirect Hot Water Heaters are available in 30 to 115 gallon capacities and feature 316L stainless steel construction and top connections for an easy installation.

STANDARD EQUIPMENT

Heat Exchanger: 316L Stainless Steel Burner. MAC-205 and MAC-165 are also equipped with a stainless steel brazed plate heat exchanger

Primary/Secondary LABOR SAVER™ Manifold

Boiler Control Module: High Limit/Electronic Ignition Control

User Display Interface: Digital Temperature Display with diagnostics and programmable settings

Adaptive Combustion: Automatically modulating gas valve with 5.5:1 Turndown for Heating Mode and 7:1 for DHW Mode. Stainless Steel Burner, Direct Spark Ignition, Separate Flame Sensor, 100% shutoff

Other: Assembled Boiler with Jacket, Induced Draft Fan, High limit sensors, 30psi Relief Valve, Low Water Pressure Switch, and Temperature/Pressure Gauge. Built-in Load Matching Pump

OPTIONAL EQUIPMENT:

Outdoor Temperature Sensor, Indirect Tank Sensor, Floor Stand Kit

LEARN MORE!

You can learn more about the MAC/MAH and our full line of products, services, training and support by visiting our website, or check out our Facebook page.

www.uticaboilers.com   

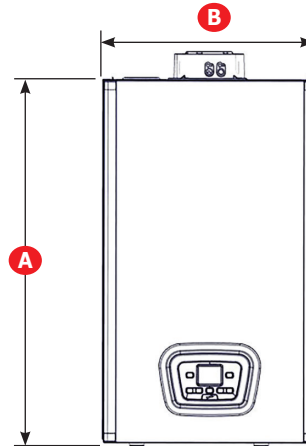


PHYSICAL DATA

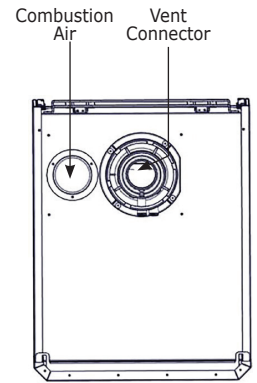
PRODUCT DIMENSIONS

DIMENSIONS	125 & 150	205 & 165
A HEIGHT	30" [763mm]	30" [763mm]
B WIDTH	17 3/4" [450mm]	17 3/4" [450mm]
C DEPTH	13 9/16" [345mm]	21 1/2" [571]
D CONDENSATE TRAP CONNECTION	13/16" [21mm] ID Hose	3/4" [19.1mm] NPT
E SYSTEM SUPPLY	3/4" [19.1mm]	1" [25.4mm]
F DHW OUTLET (125 OPTIONAL)	1/2" [15.9mm]	3/4" [19.1mm]
G GAS CONNECTION	3/4" 19.1mm	3/4" [19.1mm]
H DHW (COLD WATER) INLET	1/2" [15.9mm]	3/4" [19.1mm]
I SYSTEM RETURN	3/4" 19.1mm	1" [25.4mm]
J BOILER FILLING CONNECTION	1/2" [15.9mm]	External to Boiler
L PRIMARY WATER CONTENT	1 gal [3.60L]	1 1/4 gal [4.73L]

FRONT VIEW
all models

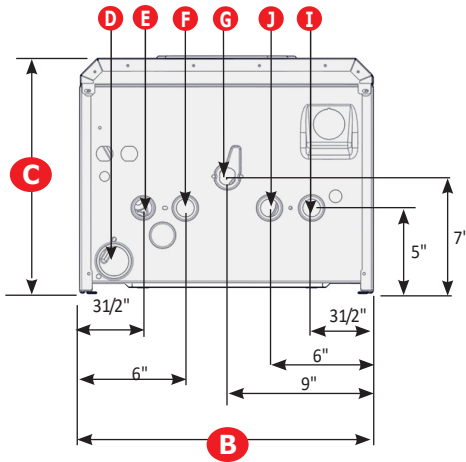


TOP VIEW
all models

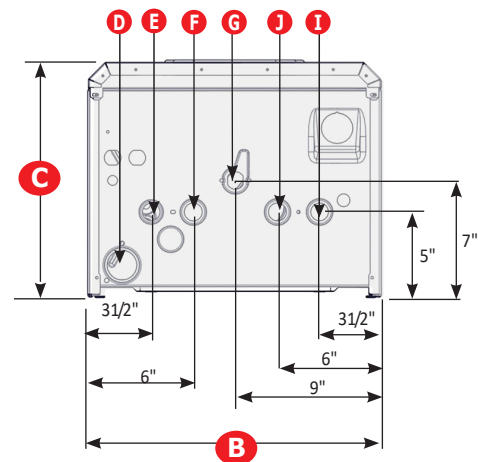


BOTTOM VIEWS

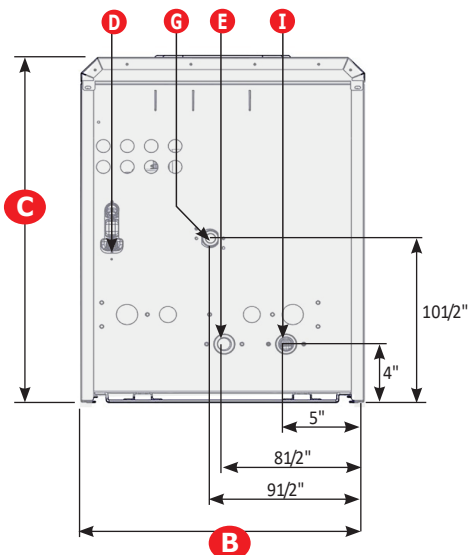
125 HEAT-ONLY



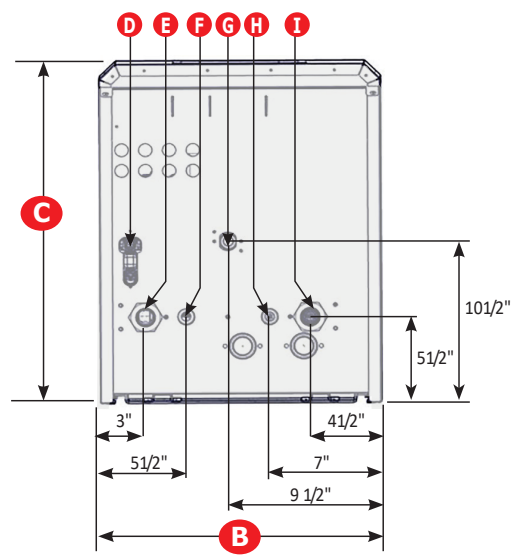
150 COMBI



165 HEAT-ONLY



205 COMBI



PRODUCT SPECIFICATIONS

IN DOMESTIC HOT WATER MODE

MODEL	INPUT MBH		FLOW RATE (Based on 70° Temperature rise)
	MAX	MIN	Gallons per minute
COMBI MAC-150	153	22	3.5
	MAC-205	205	29.5

IN SPACE HEATING MODE

MODEL	INPUT MBH		AHRI CERTIFIED RATINGS		
	MAX	MIN	Heating Capacity MBH	Efficiency AFUE %	Net Water MBH (1)
COMBI MAC-150	125	22	113	95	98
	MAC-205	164	29.5	153	95
HEAT ONLY MAH-125	125	22	113	95	98
	MAH-165	164	29.5	153	95

(1) Net Water Rating shown based on piping and pickup allowance of 1.15. Consult manufacturer before selecting boilers for installation having unusual piping and pickup requirements, such as intermittent system operation, extensive piping systems, etc.

VENT MATERIAL / SIZE In Inches (mm)

MODEL	COAXIAL (2)	2-PIPE Polypropylene (2)	
		2" or 3" (60mm or 80mm)	2" or 3" (60mm or 80mm)
COMBI MAC-150	2/4" (60mm/100mm)	3" (80mm)	3"
	MAC-205	3/5" (80mm/125mm)	2" or 3" (60mm or 80mm)
HEAT ONLY MAH-125	2/4" (60mm/100mm)	3" (80mm)	3"
	MAH-165	3/5" (80mm/125mm)	2" or 3" (60mm or 80mm)

(2) Refer to IOM and vent pipe manufacturer's instructions for equivalent lengths and approved venting materials

BOILER CLEARANCES

DIMENSION	Combustible Materials (3)	Manufacturer Recommended for SERVICE (3) (4)
TOP	0" (0cm)	8-5/8" (220mm)
LEFT	1-3/4" (45mm)	1-3/4" (45mm)
RIGHT	1-3/4" (45mm)	1-3/4" (45mm)
FRONT	0" (0cm)	17-3/4" (450mm)
BACK	0" (0cm)	0" (0cm)
BOTTOM	0" (0cm)	*9-13/16" (250mm)
COMBUSTION AIR/VENT PIPING	0" (0cm)	6" (160mm)

(3) Required distance measured from boiler jacket.

(4) Service, proper operation clearance recommendation.

* Allowance for piping at the bottom of the boiler not included.

CERTIFICATIONS



2201 Dwyer Avenue, Utica, NY 13501
 Tel. 800.253.7900
www.ecrinternational.com

All specifications subject to change without notice.
 © 2019 ECR International, Inc.
 PN 240011407 Rev. FM [2/7/2019]